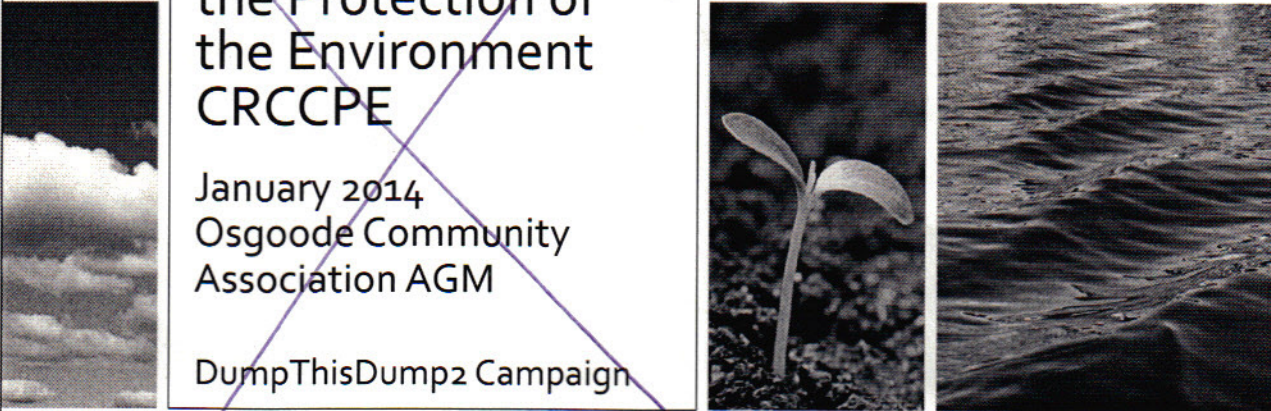


**Capital Region
Citizens Coalition for
the Protection of
the Environment
CRCCPE**


January 2014
Osgoode Community
Association AGM

DumpThisDump2 Campaign



Learn from Past Mistakes

- Historically not a lot of thought and effort went into the long term management of waste
- New landfills were built everywhere
- Unfortunately this is a costly legacy that remains for years to come
- We cannot let this continue !
- We need to stop this insanity !
- **We need change – we cannot continue to just approve more dumps !!**



Closed Landfills in the City of Ottawa

Ottawa

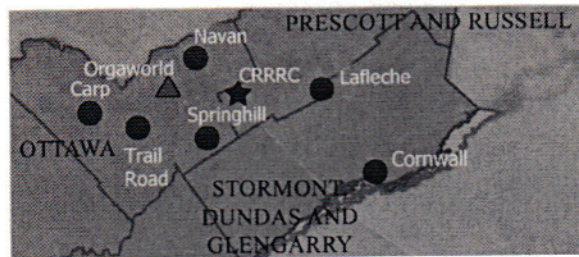
City of Ottawa
Solid Waste Management
Department
1000 Somerset Street West
Ottawa, Ontario K1R 7B4
Tel: 451-2222
www.ottawa.ca

City of Ottawa
Solid Waste Management
Department
1000 Somerset Street West
Ottawa, Ontario K1R 7B4
Tel: 451-2222
www.ottawa.ca

2 January 2014 DTD: Osgoode Community Association AGM

Sufficient Existing Landfill Capacity (in Eastern Ontario)

- Today the Ottawa Region is home to 5 LARGE landfills, plus numerous township dumps,
 - Carp Road (Waste Management): IC&I and C&D
 - Trail Road (City Owned): Residential waste
 - Navan Road (BFI): IC&I and C&D
 - Springhill Road (City owned / Tomlinson operated): Residential, C&D
 - Moose Creek (Lafleche Environmental): Residential, IC&I and C&D
- There are two proposals for waste transfer stations within 10 minutes of the proposed Boundary Rd site (Burton Rd/Corduroy Rd, Herbert St/Russell Rd)



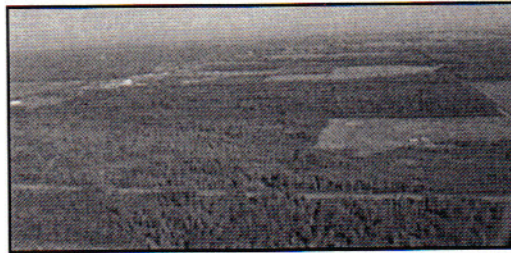
3

January 2014

DTDx Osgoode Community Association AGM

Sufficient Existing Landfill Capacity (in Eastern Ontario)

- Ottawa disposes of 457,000 tonnes of IC&I waste /year
- Ottawa currently has 817,750 tonnes/year of available disposal capacity for IC&I + C&D
- Clearly NO new landfills should be established because Ottawa has more than enough disposal capacity using existing sites
- In spite of this, Taggart Miller want to destroy 450 acres of forest and fields to build their own landfill and recycling depot. Likely the site will receive waste from throughout Ontario.



4

January 2014

DTDx Osgoode Community Association AGM

Details of the CRRRC Boundary Rd Landfill

- 450 acre solid waste facility at Boundary Rd / Hwy 417 (4x the footprint of the existing Carp facility)
- receive 300,000 – 450,000 tonnes/year of waste
 - Industrial, Commercial & Institutional Waste (IC&I)
 - ➔ This is waste from private institutions, private businesses, malls, apartment buildings, garages, etc. Private companies contracting with private waste contractors (Taggar Miller) to dispose of their waste.
 - Construction & Demolition Waste (C&D), including contaminated soil
- waste from Eastern Ontario (down to Belleville)
- **the Landfill IS the largest component of the CRRRC project** (only 13% of incoming waste to be recycled initially with **87% to be dumped in the landfill !**)



5

January 2014

DTD: Osgoode Community Association AGM

Boundary Rd Site NOT Suitable

- on the site ➔ high water table, surface water and sand layers which raise the risk of off-site migration of contaminants which could pollute private wells, the Bear Brook, Shaw's Creek, and beyond
- the softness of the deep, weak, clay soil make the site unstable for a large weighty structure (like a landfill)
- the soil at the Boundary Rd site is classed as the most vulnerable (at risk) during seismic events (which are a real risk in this part of the province) – increased shaking in an earthquake; liquefaction of the Leda clay
- in an area of high seismic risk (possible faults within a few hundred meters from the site)

Not an engineering issue but a geological issue (site conditions are such that it is going to be difficult if not impossible to contain the resulting leachate)

6

January 2014

DTD: Osgoode Community Association AGM

Impacts

- if we allow this new landfill to go in, we will have excess landfill capacity in the Region which will drive down dumping fees and discourage recycling (it will be easier and cheaper to dump)
- with excess capacity will also come more waste from outside of Ottawa
 - **More emphasis should be placed on recycling and diversion (instead of building increased dump capacity) !**
- impacts on local wells and water shed
- impact on roads and traffic congestion (min 1 truck every minute)
- loss of adjacent agricultural land (when it becomes contaminated)
- airborne pollutants
- negative impact on adjacent protected areas (Cumberland Forest, Shaw's Creek and Bear Brook Brook)
- turn Ottawa into the dumping ground for waste from Toronto and elsewhere

7

January 2014

DTD's Ossegoe Community Association AGM

Community Responsibility

The *Environmental Assessment* process does NOT protect communities from un-needed dump proposals. We cannot sit back and hope the MOE will see it our way in the end.

- We are not a willing host community – the project is NOT needed!
- Opening a new landfill on a greenfield site should be a LAST resort!
- We have better options in place already!

we need you to . . .

- reach out to the Honourable Jim Bradley, Minister of the Environment
- reach out to your provincial member of parliament to let them know you have serious concerns
- reach out to your municipal councilor – tell them you are against another dump in Ottawa !
get the City of Ottawa to put extreme pressure on the Province – and say NO to another landfill !
- write to the Citizen, the Sun, and LeDroit and other media outlets – to let them know that there is a real serious issue – make this issue visible !
- **WE NEED YOU TO STAND and SPEAK UP WITH US !!!**

8

January 2014

DTD's Ossegoe Community Association AGM